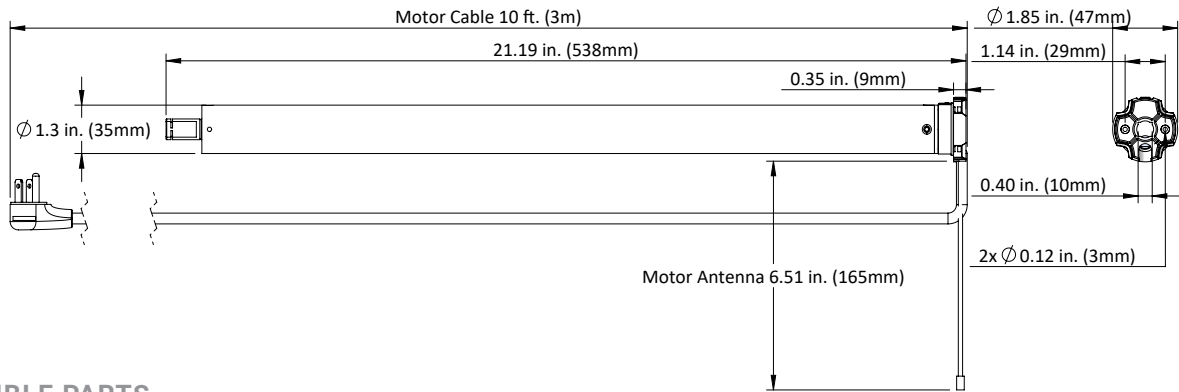


PRODUCT SPECIFICATIONS

Part #: MTACQRF35 - 6 Quiet AC Tubular motor with RF control.

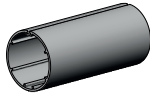
Voltage	120V AC	Limit Switch Type	Electronic
Torque	6.0Nm	Current	0.85A
Max Run Time	4 min	Temp Working Range	32°F to 140°F (0°C to 60°C)
Speed	24 RPM	Insulation Class	III
Radio Frequency	433.92 MHz	Sound Level	~42 dB
RF Modulation	FSK	Power	102W
IP Rating	IP44		

DIMENSIONS

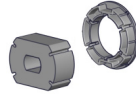


COMPATIBLE PARTS

Tubes



Crown & Drives



Adaptors



2" Ribbed Tube	MTCRDR-35-2
S45 - Light	MTCRDR-35-S45
S45 - Std	
S45 - HD	
40mm Octagonal (3rd party product)	VB40-0306-050408 & MTCR-35-2-OCT

- MTAD-252835-SL
- MTAD-25-28-SLV2W
- RB40-1402-069400

COMPATIBLE SYSTEMS

- Skyline Roller Shades
- S45 Roller Shades

COMPATIBLE ACCESSORIES (refer to catalog for full item listings)

Controllers



Pulse 2 HUB



Push 5 remotes