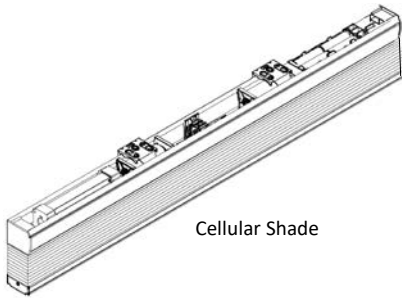


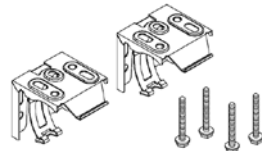
Simple Touch® 15-Channel Remote Cellular Shades

- Installation and Care Instruction

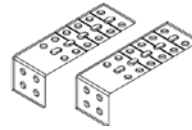
1. Identify your cellular shade and parts (your parts may vary, depending on the custom request & size of the shade you are purchasing.)



Cellular Shade



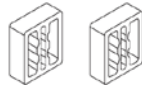
Brackets & screws



Extension brackets (optional)

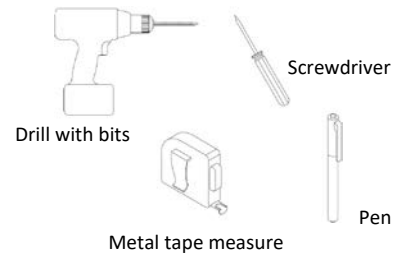


15-Channel Remote



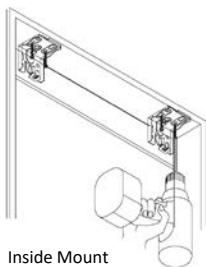
Spacers (optional)

2. Tools you may need (not included)

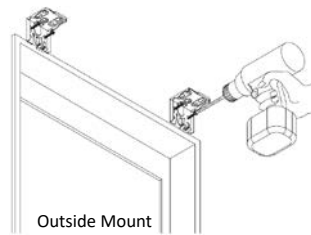


3. Install the brackets

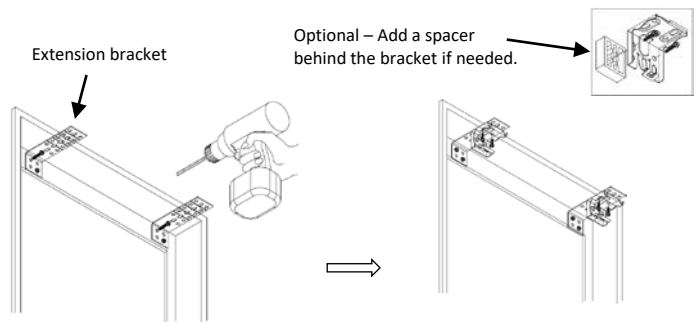
- Mark the bracket locations. Space the brackets evenly and make sure the brackets will not interfere with any mechanism or other internal headrail parts.
- Install the brackets using screws (included) and tighten them completely.
- Make sure all brackets are aligned and level with each other.
- Install the shade with extension brackets (optional)
 - Install the extension bracket with at least 2 screws.
 - Attach the hidden brackets to the extension brackets with the screws.



Inside Mount

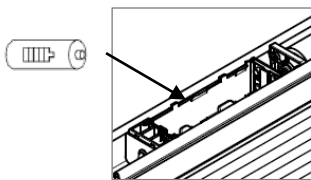


Outside Mount

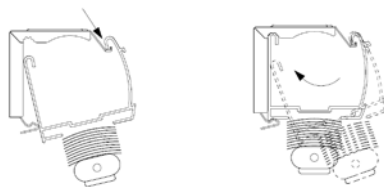


Optional – Add a spacer behind the bracket if needed.

4. Put 8 Lithium AA batteries inside the battery box.

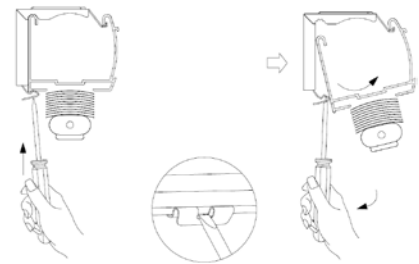


5. Mount the shade onto the brackets



6. Change the batteries.

Remove the shade from the brackets. Replace with new batteries (do not mix new batteries with used batteries). Mount the shade.



Care and Clean

- Wipe the shade periodically with a soft dust cloth or dusting mitt, or vacuum with a lowest speed.

Notes

- Do not spill water to the headrail and the remote.
- Do not clean/ operate the motorized shade with wet hands
- The warranty for your shades does not cover damage caused by improper cleaning.
- Changing the batteries won't change the programming setting.

