

## ■ Know Your Shade

Number of parts included for each shade:

Shade width	Brackets	Screws	Handle
24" ≤ W ≤ 38"	2	4	1
38" < W ≤ 72"	3	6	2

2 Headrail End Caps  
2 Bottomrail End Caps

- Bracket



- Hex-Head Screw



- Handle



- Headrail End Caps

Left side:



Right Side:



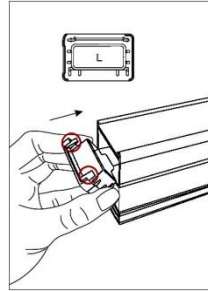
- Bottomrail End Caps



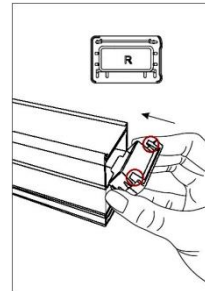
## ■ Prepping the Shade

Install Left and Right Head Rail End Caps by sliding both top tabs into top of headrail.

Left Side:

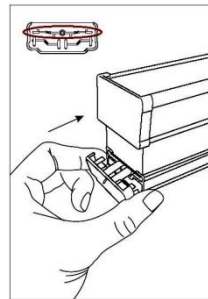


Right Side:

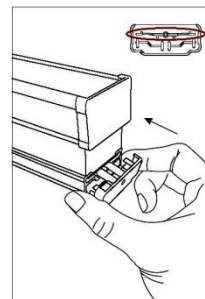


To install Bottom Rail Left and Right End Caps, match the flat side of end caps with the bottom rail of your shade (For bottom rail end caps, left / right side are the same). By using the flat surface on end caps, push fabric/ stiffener against end of rail and slide end caps into side of rail.

Left Side:

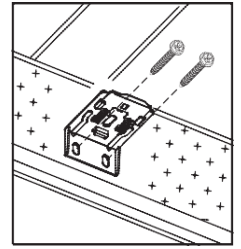
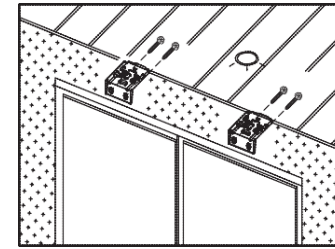


Right Side:



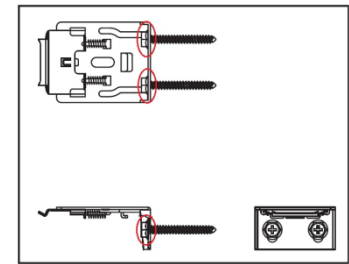
## ■ Outside Mount

Position brackets above window opening. Remember to leave the brackets few inches away from each side of your window. Spread them out evenly by having same distance from each side of the window.



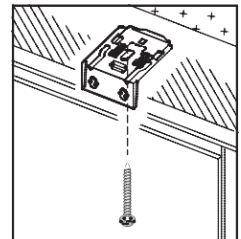
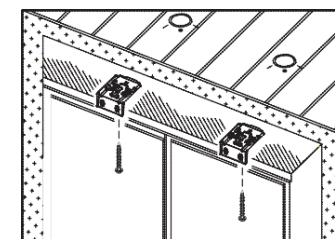
Make sure brackets are aligned. "L" shape opening should be facing down, with shorter side against the wall.

Insert 2 hex-head screws into both openings and fasten.



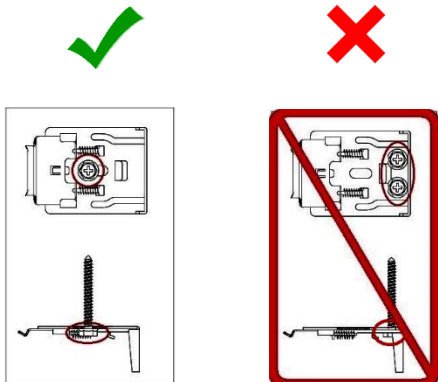
## ■ Inside Mount

Position brackets along the top of the window opening in the desired location. Remember to leave few inches away from each side of your window.



Make sure both brackets are aligned. "L" shape opening should be facing down, with longer side against top of the window opening.

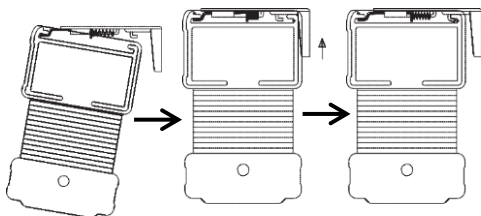
Insert 1 hex-head screws into oval opening, between 2 springs, and fasten.



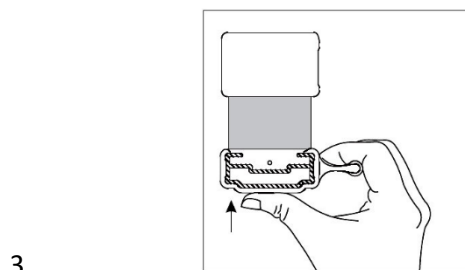
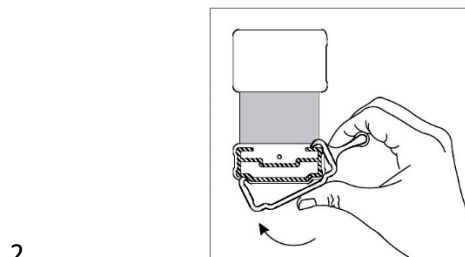
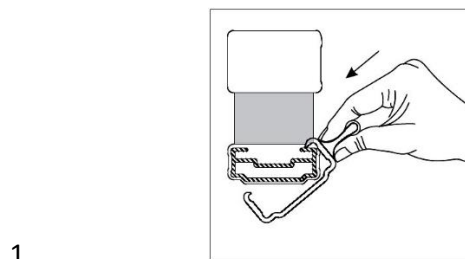
**DO NOT** use hex-head screws for holes on the back of the bracket for inside mount. It will prevent your shade from clicking in place. These holes can be operated with 2 flat-head screws (Flat-head screws are not included in the package).

### ■ Mount Shade on Brackets

Install the head rail by hooking the front of the bracket and push shade towards back of brackets, in a rolling motion, until clicks place.



### ■ Installing Handle



Transparent Cordless Handles should be operated from the center of the bottom rail.

For shades  $38'' < W \leq 72''$ , spread handles out evenly by having the same distance from each side of the window.

**To insure proper usage of cordless shades, be sure to extend and retract shade steadily assuring the cord to stack evenly.**

**\*\*Please allow 24 hours for your shade to drop to its actual height when first installed due to the nature of the fabric.**

## CORDLESS CELLULAR SHADE INSTALLATION INSTRUCTIONS