

4000 NET

SOLAR SCREEN



TEXTSTYLE

4000 NET

4000 NET Solar Screen fabrics offer a stylish and modern aesthetic for window treatments that minimize the negative effects of the sun, while preserving outward visibility.

4000 NET is similar in appearance to 3000 NET but made of a heavier weight yarn making it ideal for commercial applications as well as exterior treatments.

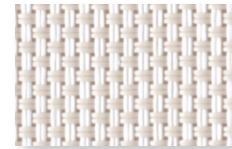
FEATURES

- A unique manufacturing process delivers technically superior fabrics that are backed by a limited lifetime warranty
- Environmentally friendly and safe
- Flame Retardant
- Available in two openness factors - 3%, 5%
- Available in 13 colors
- Versatile – can be used in roller shades and panel track applications

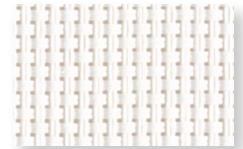
COLORS



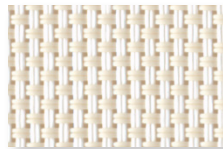
NPE1 DOVE/DOVE



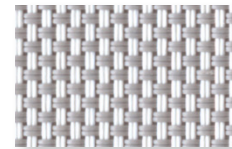
NPE2 DOVE/SAND



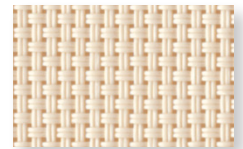
N001 WHITE/WHITE



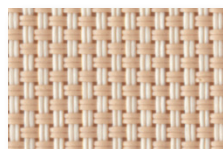
N002 WHITE/BEIGE



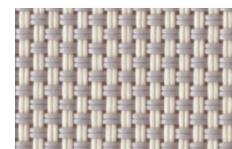
N003 WHITE/GRAY



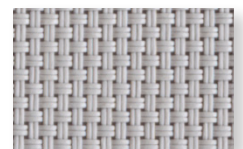
N201 BEIGE/BEIGE



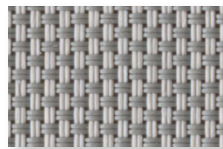
N202 BEIGE/SABLE*



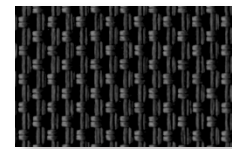
N203 BEIGE/GRAY



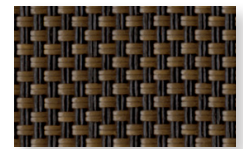
N301 GRAY/GRAY*



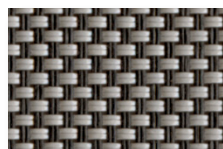
N302 GRAY/DARK GRAY*



N901 CHARCOAL/CHARCOAL



N902 CHARCOAL/BRONZE



N903 CHARCOAL/GRAY*

* Only Available in 5%

Bringing Fabrics to Life

USA | AUSTRALIA | EUROPE textstyle.com

A DIVISION OF
**ROLLEASE
ACMEDA**

©2020 Textstyle

4000 NET

SOLAR SCREEN



SPECIFICATIONS

	3%	5%
Series	4000 NET	
Composition	27% Polyester, 73% PVC	
Openness Factor	Average 3%	Average 5%
Weight	16.07oz/yd ² (545 g/m ²)	15.35 oz/yd ² (520 g/m ²)
Thickness	0.029in (.75mm)	0.027 in (0.70mm)
Colorfastness	Grade 8	
Average length	33 yd/roll (30m)	
Width	98.4" (2.5m), 118" (3m)	
Cutting	Cold, Crush, and Ultrasonic	
Welding	248°F (120°C) to 284°F (140°C)	
Railroadable	Yes	
Cleaning	Wipe clean with warm soapy water and damp cloth.	
Environmental Standards	Greenguard Gold, Oeko-Tex Standard 100	
Fire Classifications	NFPA 701, M1, B1, B2, CA Title 19	

THERMAL AND OPTICAL FACTORS | BASED ON 5% OPENNESS

CODE	Thermal Factors						Optical Factors
	Ts	Rs	As	Shading Coefficient			
				1/8" CL	1/4" CL	1/4" HA	Tv
N001 White/White	16	67	17	0.32	0.33	0.32	11
N002 White/Beige	14	58	28	0.39	0.38	0.34	9
N003 White/Gray	10	45	45	0.47	0.46	0.38	8
N201 Beige/Beige	14	51	35	0.44	0.43	0.37	11
N202 Beige/Sable	12	47	41	0.46	0.45	0.38	9
N203 Beige/Gray	10	39	51	0.51	0.49	0.40	8
N301 Gray/Gray	8	31	61	w0.56	0.54	0.43	7
N302 Gray/Dark Gray	8	23	69	0.62	0.59	0.45	8
N901 Charcoal/Charcoal	6	5	89	0.73	0.69	0.51	6
N902 Charcoal/Bronze	6	7	87	0.72	0.68	0.50	6
N903 Charcoal/Gray	6	12	82	0.74	0.69	0.52	6



FR



LEAD FREE



PHTHALATE FREE



FRAGRANCE FREE



ANTI-BACTERIAL



ENERGY SAVING

Bringing Fabrics to Life

USA | AUSTRALIA | EUROPE textstyle.com



©2020 Textstyle