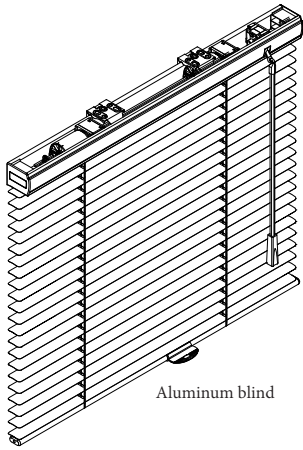
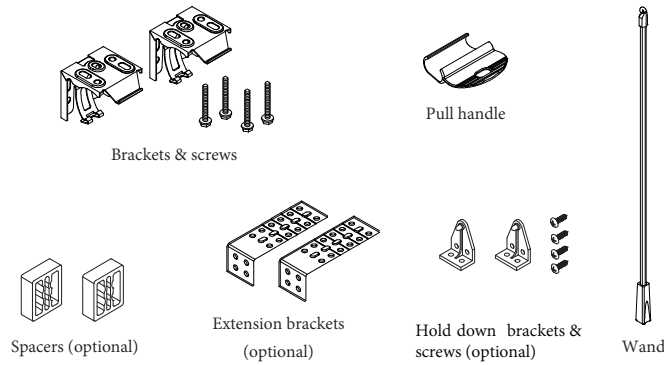


# 1" Cordless Aluminum Blind Installation and Care Instruction

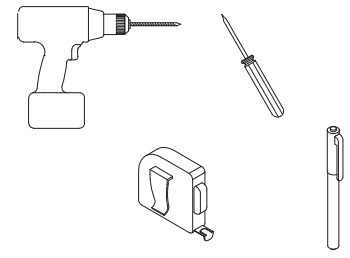


1. Identify your aluminum blind and parts (your parts may vary, depending on the custom request & size of the blind you are purchasing.)



2. Tools you may need (not included)

- Drill with bits
- Metal tape measure
- Screwdriver
- Pen



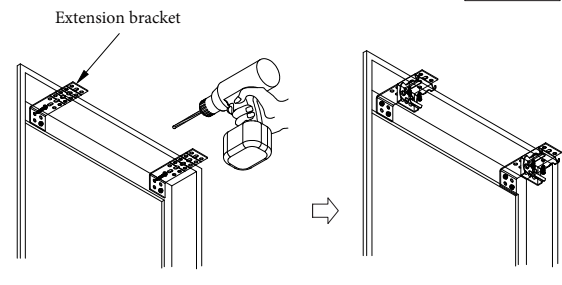
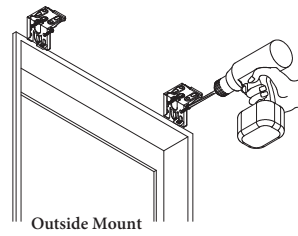
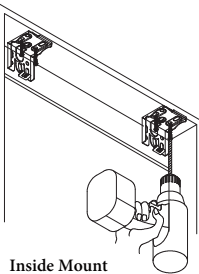
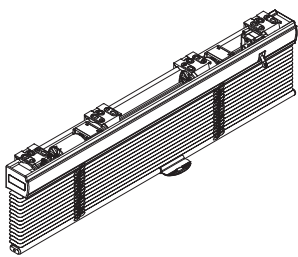
## 3. Install the brackets

- Mark the bracket locations, making sure the brackets will not interfere with any mechanism or other internal headrail parts. The outermost brackets should be installed about 1/4 inch from each end of the blind. If you have more than 2 hidden brackets, install all remaining brackets towards the center of the blind.
- Install the brackets using screws (included) and tighten them completely.
- Make sure all brackets are aligned and level with each other.

- Install the blind with extension brackets (optional)

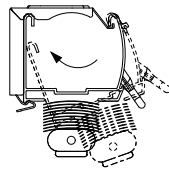
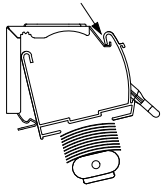
- Install the extension bracket with at least 2 screws.
- Attach the hidden brackets to the extension brackets with the screws.

Optional - Add a spacer behind the bracket if needed.



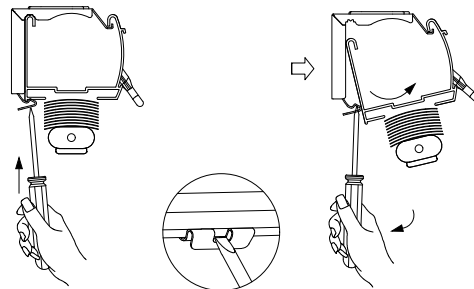
## 4. Attach the blind

- Position the headrail with the front lip resting on the top hooks of all the brackets.
- Push the bottom of headrail firmly upward and toward the window until the groove at the bottom of the headrail snaps into place.



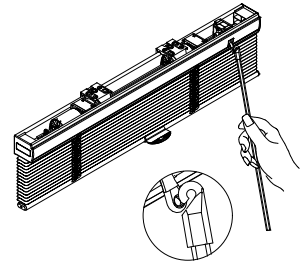
## 5A. How to remove the blind from the brackets

- Unlock the hidden brackets with a flat head screwdriver.



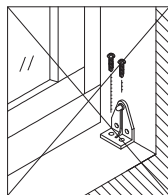
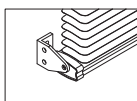
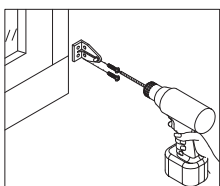
## 6. Attach the tilt wand

- Attach the tilt wand onto the wand hook located on the headrail.



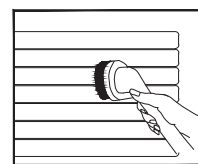
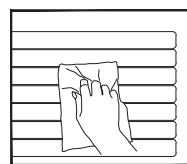
## 7. Attach the optional hold down brackets

- Install the hold down brackets to the wall (for outside mount) or jamb of window frame (for inside mount), not on the sill of window frame.
- Tighten the screws.

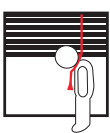


## 8. Care and Clean

- Wipe the blind periodically with a soft dust cloth or dusting mitt, or vacuum with a soft brush attachment.
- You may clean the blinds using a non-scratched sponge or dampened soft cloth with a mild nonabrasive detergent. Never use hot water, solvents, or harsh or abrasive cleansers to clean the blinds.
- Note: The warranty for your blinds does not cover damage caused by improper cleaning.



## WARNING/ADVERTENCIA



Window blind cord can STRANGLE your child.

To prevent strangulation, purchase cordless products or products with inaccessible cords.

La cuerda de la persiana puede ESTRANGULAR a su niño.

Para evitar el estrangulamiento, compre alternativas cuerda o productos con cuerdas inaccesibles.