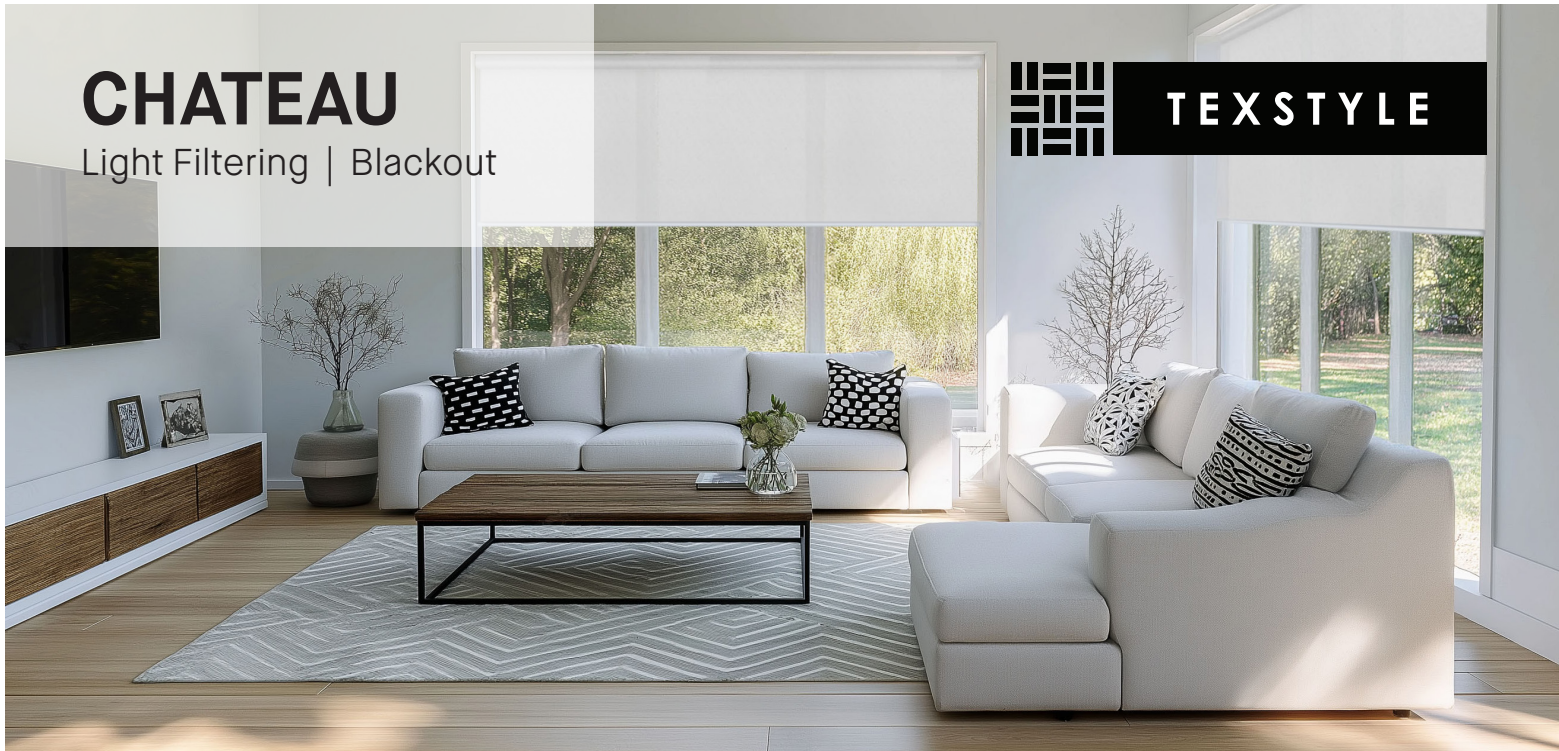


CHATEAU

Light Filtering | Blackout



TEXSTYLE



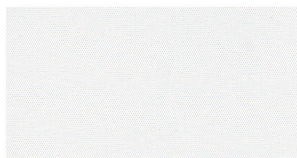
Chateau

Crafted for today's residential spaces, Chateau delivers a refined aesthetic with features that go far beyond the basics. Its soft light-filtering weave offers near-total privacy while gently diffusing natural light, ideal for bedrooms, bathrooms, and open-plan living. With superior fade resistance, eco-conscious certifications, and a wide 118" format that eliminates seaming, Chateau is as functional as it is beautiful. Available in seven curated shades, each with a color-matched backing for cohesive curb appeal, Chateau is the essential fabric for modern living.

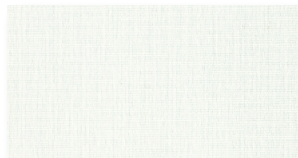
Features

- Fade-Resistant Color Performance
- Superior Privacy with Light Ambiance
- Seamless, Large-Scale Capability - Wide Width 118"
- Certified Safe & Eco-Friendly - PVC-free, PFAs-free, OEKO-TEX certified
- Fabricator-Friendly & Design-Ready - Weldable without tape and printable
- Railroadable
- 5 Year Warranty

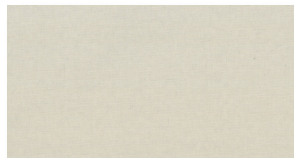
Colors



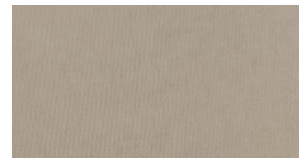
PORCELAIN



GYPSUM



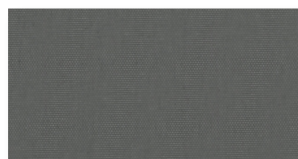
AMBER DUST



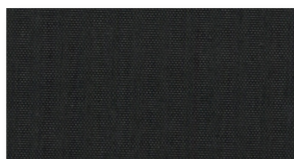
CANYON



CASTLEROCK



THUNDERSTONE



EBONY

Specifications

	LIGHT FILTERING	BLACKOUT
Composition	100% Polyester	100% Polyester
Openness Factor	Private (<1%)	Blackout
Weight	6.19 oz/yd2 (210 g/m2)	10.03 oz/yd2 (340 g/m2)
Thickness	0.012 in (.30mm)	0.018 in (.45mm)
Light Fastness	≥ 6 (Blue Wool Scale)	
Average length	33yd/roll (30m)	
Width	118" (3m)	
Cutting	Knife, Crush, Ultrasonic	
Welding	Tape required	No tape required
Railroadable	Yes	
Cleaning	Lightly vacuum or wipe with dry cloth to remove dust. Gently wipe clean with damp sponge. Do not soak. Avoid solvents or test them in inconspicuous area first	
Environmental Standards	OEKO-TEX Standard 100, RoHS Compliant	



PVC FREE



LEAD FREE



PHTHALATE FREE



FORMALDEHYDE FREE



FRAGRANCE FREE



PRINTABLE



STANDARD 100



9001



5 YEAR WARRANTY